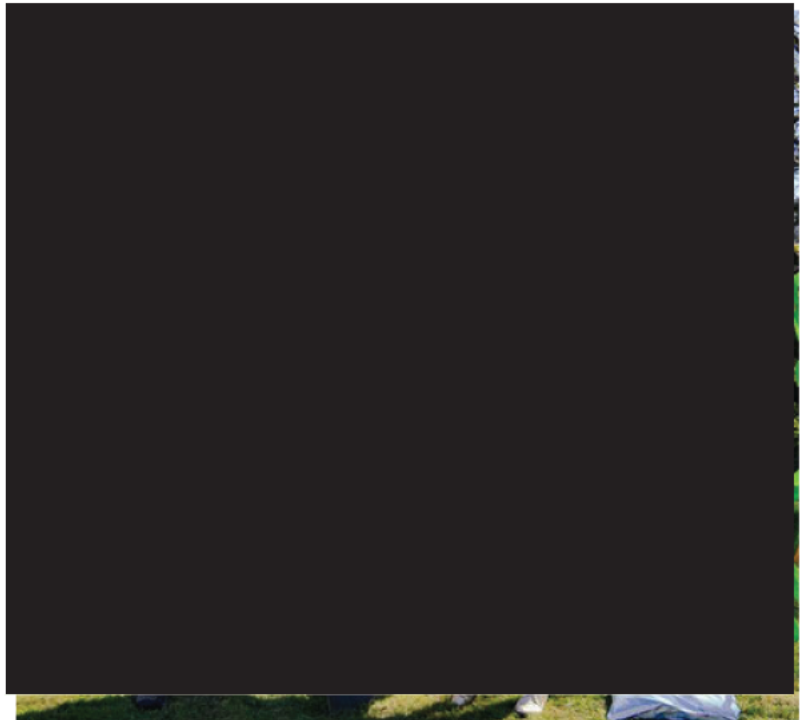




EcoArt

***TRUSTEE'S
ANNUAL
REPORT***

*30 January
2024 to
1 February
2025*



Art commission - Speed Seed Dating



*Upcycled Lantern Making for the
Festival of Light, Kirkcudbright*

EcoArt SCIO A Scottish Registered Charity No. SC049905

OUR CONTACT DETAILS

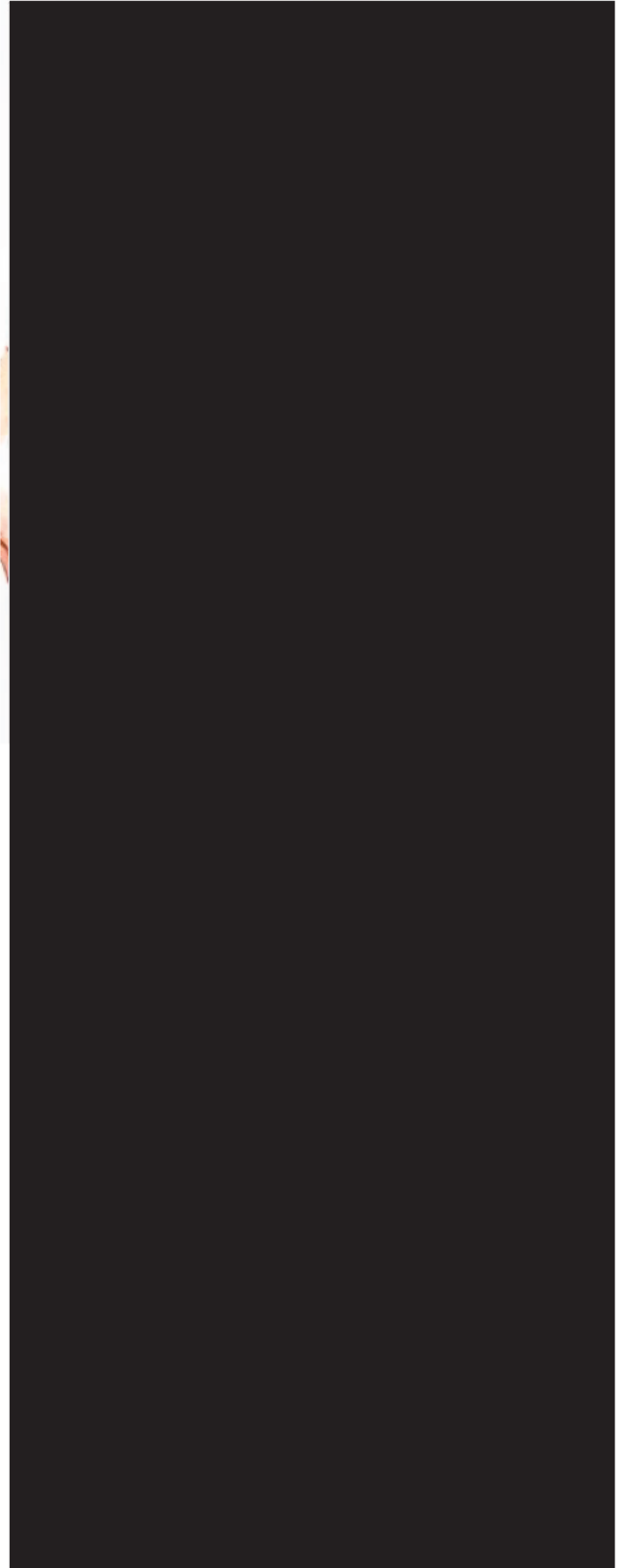
EcoArt



Charity Trustees

The following trustees were appointed for the entire report period.

Some details on each trustee is given on our website.



foraged festive wreath workshop

OBJECTIVES AND ACTIVITIES

EcoArt was constituted on the 30th of January 2020 with these stated purposes:

Environmental protection for public benefit by

a) advancing reductions in: consumption; waste; plastic use; demand for virgin resources; greenhouse gas emissions; and energy use.

b) the promotion of sustainable development including raising awareness of environmental sustainability and creating action on climate change.

All to be achieved by connecting people with art and creative pursuits

that encourage a more environmentally conscious and sustainable lifestyle.



Repair Cafe volunteers celebrating its launch

Furthermore, EcoArt is able to promote, establish, operate and/or support other similar schemes, organisations, individuals and initiatives which are in furtherance of the charitable purposes. In order to achieve its objectives EcoArt is pursuing three principle threads:

STRUCTURE, GOVERNANCE AND MANAGEMENT



Filming with the BBC, Eco Printing workshop

Type of governing document

EcoArt is a Scottish Charitable Incorporated Organisation governed by our constitution.

Trustee recruitment and appointment

The board of trustees has remained constant throughout the year.

The board contains an excellent balance of skills to allow EcoArt to achieve its objectives.

We have a mixture of environmental artists, project administrators, educators, public communicators, entrepreneurs and successful realisers of art project funding.

More information on the trustees is available on our website at

www.ecoartcharity.org/about-us

OVERVIEW

A Year of Achievement and Growth



ECOART

REPAIR CAFE



First Saturday of the month
From 2nd March
11am-1pm

Come fix it, don't ditch it!

Bring jewellery, clothing, bicycles, woodwork, small electricals, toys, bits n bobs. Fixers will be on hand to help you learn to repair!

No booking necessary. Refreshments available whilst you wait!

Cost: Parts only!

Volunteer helpers & fixers needed! Contact Nups at repair@ecoartcharity.org for more info

The Board of Trustees is delighted to present this report on what has been a truly outstanding and transformative year for EcoArt. We have not only achieved a significant number of our strategic objectives but have also successfully consolidated our presence and expanded our impact within the community.

Organisational Development & Community

Integration: *The past year has seen us successfully transition and embed within our new premises in Kirkcudbright. This move has been instrumental in fostering deeper engagement with local organisations and strengthening our roots within the community. We are incredibly proud to acknowledge the invaluable contribution of our 25 dedicated volunteers, whose tireless efforts and generous donation of time are fundamental to our operations and success. Their commitment is deeply appreciated by the Board and the communities we serve.*

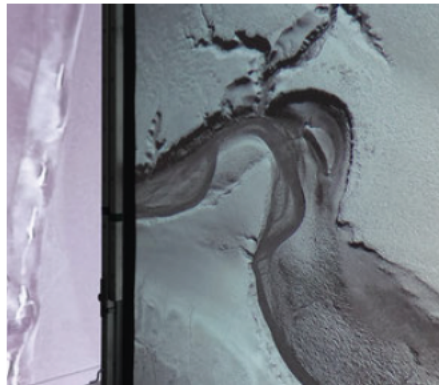
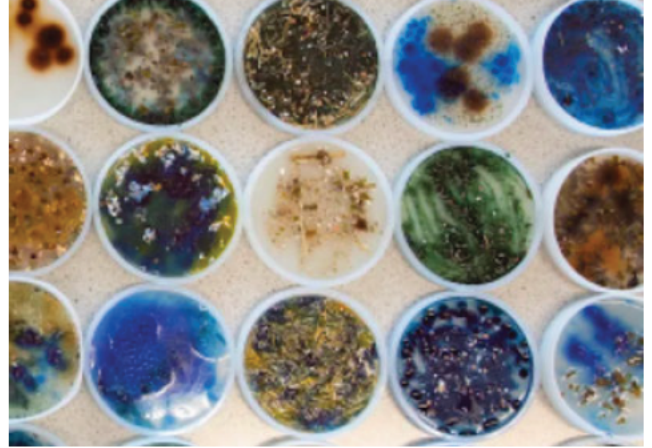
Press, Daily Record on the Repair Cafe

Repair Café Launch & Impact: A significant highlight of the year was the successful launch of our Repair Café initiative at the beginning of the year. This service has quickly proven to be immensely popular and impactful. Over the reporting period, we welcomed more than 400 visitors, who collectively brought 310 broken items for repair. Our team of highly skilled fixers achieved an exceptional repair rate of 82%, successfully mending 254 items. Of the remaining items, 42 were deemed unrepairable, and 14 were expertly signposted to more specialist repair services. This outstanding success underscores our commitment to promoting circular economy principles and reducing waste within the community

OVERVIEW

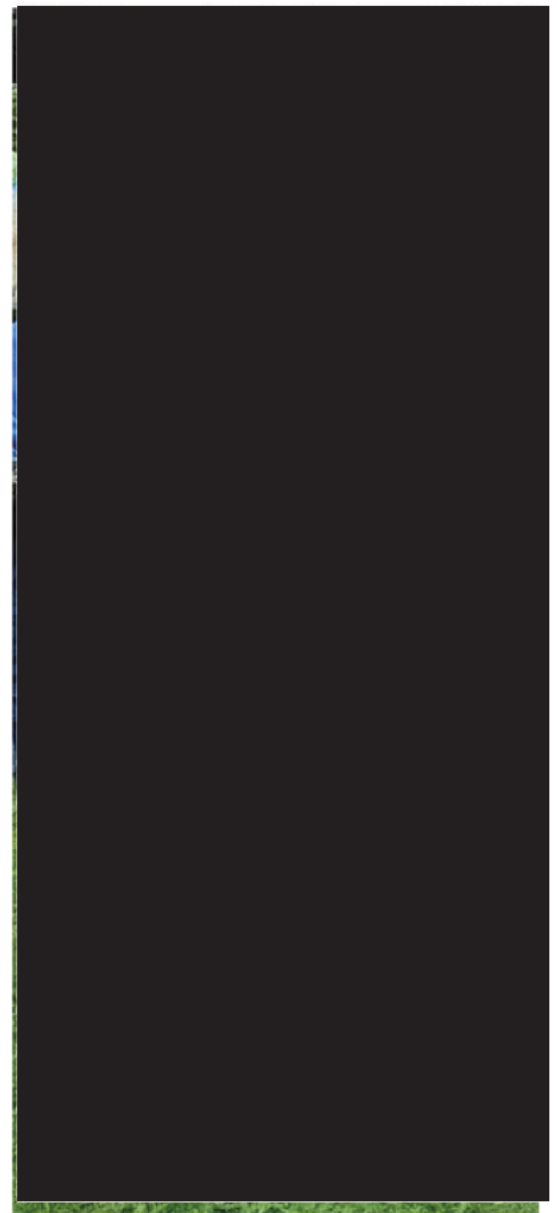
A Year of Achievement and Growth

Environmental Artists Open Call & Awards: In line with our mission to embrace the transformational power of art for social and environmental justice, we initiated an open call for environmental artists. The response was unexpectedly robust, with 74 compelling project proposals received. With a total award fund of £20,000, the Trustees faced an extremely difficult task in the selection process. This decision-making journey provided a steep learning curve for the Board, highlighting the need to streamline the initial proposal stage for future calls. To enhance efficiency for both artists and Trustees, we will request less detailed information in initial submissions moving forward. Ultimately, we were delighted to award £22,400 across 8 diverse projects, encompassing a broad spectrum of themes including installation, research, mapping, sound, events, and site-based explorations



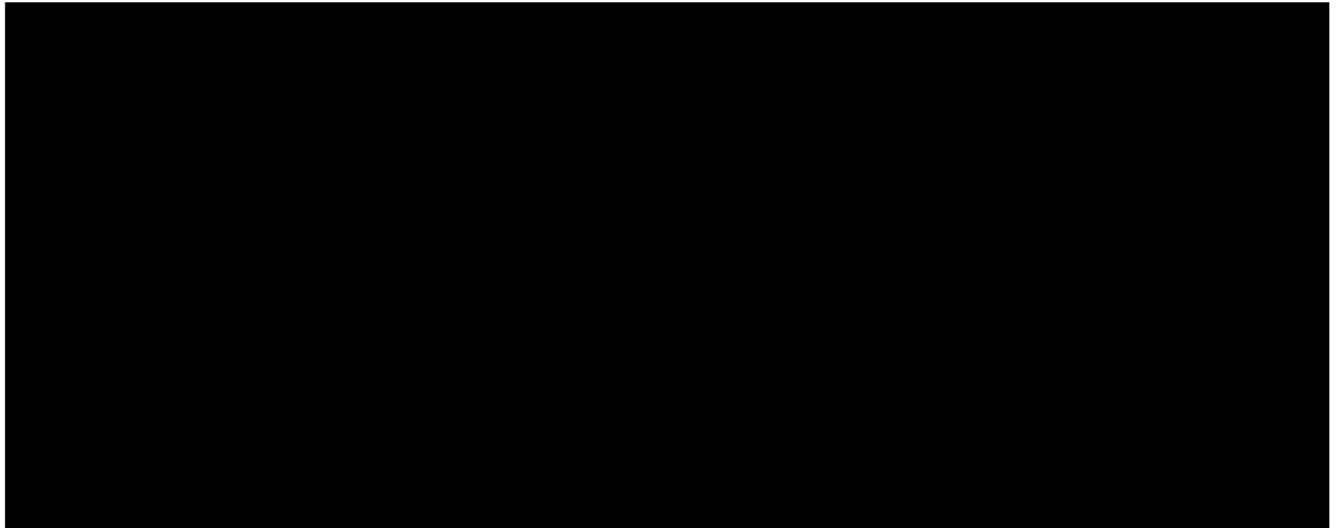
Ogilvie & Page, Conversation with our Ocean

Art Residencies and Graham Tornado Bell's "Animal Union": This year also marked the successful execution of our inaugural art residency, spanning locations in Kirkcudbright and Dumfries. We were privileged to host the exceptionally talented trans artist, [REDACTED] who launched his profound "Animal Union" project. This residency fostered significant community engagement through collaborative banner-making workshops, public interaction at a film event, the creation of a "Queer Parc," and active participation in the Nithraid festival.

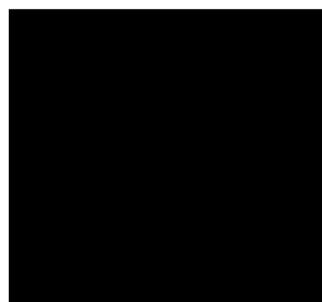
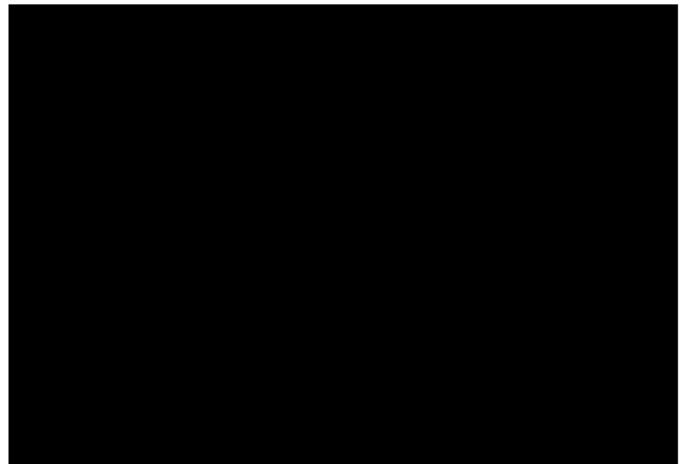
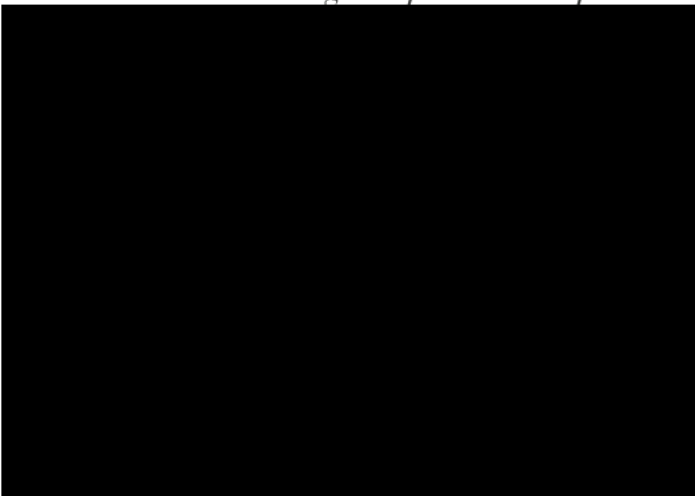


OVERVIEW

A Year of Achievement and Growth



Nithraid River Festival Transition: We have actively commenced the strategic transition of the Nithraid River Festival in Dumfries into an independent dedicated environmental art event. This year, we partnered with The Stove, who have skillfully hosted the event for the past decade with EcoArt assuming sole producer responsibilities.



A Year of Achievement and Growth

olywood Trust	5000
&G Council Community	3750
coArt SCIO	5000
eacock Salt	1000
NCBC (Kingholm Quay)	500
tove (in-kind)	1000
otal	<u>17350</u>

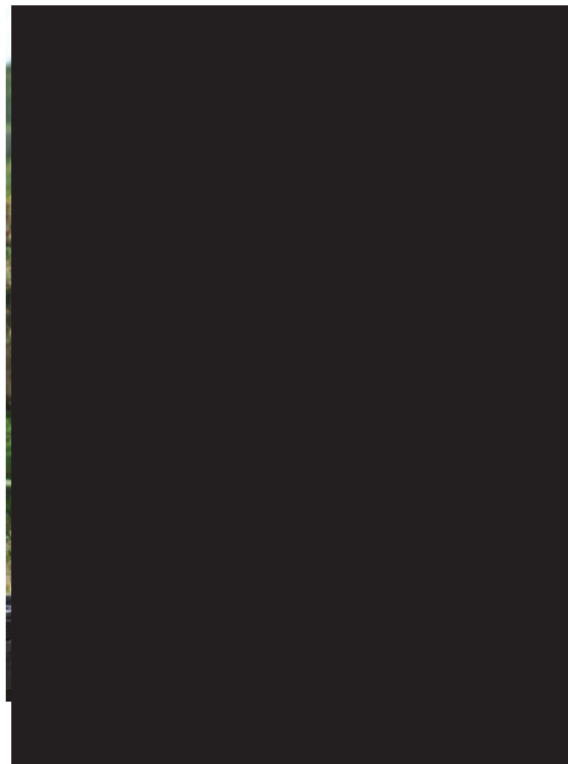


OVERVIEW

A Year of Achievement and Growth

Public Profile & Media Engagement: A notable achievement this year was the national media attention garnered by our CEO [REDACTED] and her Eco Printing workshop. Scouts for the BBC's "Robson Green's Great Weekend Escapes" were captivated by the initiative, leading to a highly successful and entertaining episode filmed in May. Lots of laughter was had, and which featured a duet between [REDACTED]. We also feature on Education Scotlands website.

Programme Expansion & Community Response: Our diverse programme of groups and meetups has continued to flourish and expand, directly responding to identified local demand. These new initiatives include popular Clothes Swaps, a series of Foraging Walks, the communal "Woolly Spinners Gaither," the reflective "Art for the Soul," and the proactive "Climate Kitchen" for sharing climate action strategies.



*Filmed this year too.
Education Scotland.
Leaning for
Sustainability film
that features EcoArt
on their website*

OVERVIEW OF THE YEAR

A Year of Achievement and Growth

Food Waste Reduction: Further demonstrating our commitment to sustainability and community welfare, we launched "Free Food Fridays," a weekly initiative for collecting and redistributing surplus food. Dedicated volunteers pick up at both local bakeries, the fish & veg shop and the Co-op

Digital Enhancement: We have unveiled a new and improved website, enhancing our digital presence and accessibility.

Conclusion: In summary, the Board of Trustees is immensely pleased to report a year of exceptional productivity, during which EcoArt has successfully met all its objectives. Our achievements across community engagement, sustainable initiatives, artistic programming, and organisational development position us strongly for continued growth and impact in the coming year. We extend our sincere gratitude to all our volunteers, partners, and the wider community for their unwavering support.

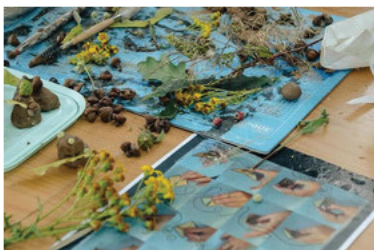
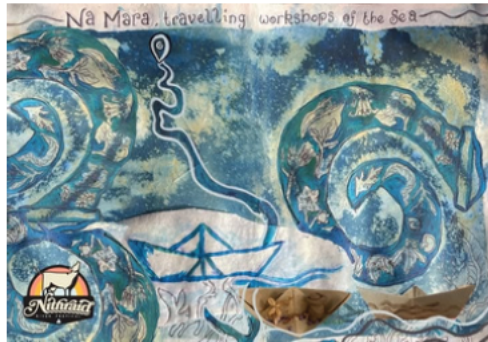
COMMISSIONED ART

8 ART PROJECTS

To go with safe water': Bike and Bike Trailer with Mobile Workshop, hosted by

Set sail on the river Nith with our paper boats workshop! Come learn about natural inks, seed sharing, plant identification and river justice. And celebrate all the flourishing growth and life of the river!

Get involved with origami boat making with handmade papers, writing notes for downstream/the future, and folding up to set sail on the water. Participants will have the option of adding clay figures with seeds, dried flower heads etc. and to help start a sea scroll, adding drawings and identification of our findings along the river, which will then travel North to be filled out by participants across the west coast as cycles north.



Travelling workshops of the Sea

Na Mara is a series of pop up workshops, traveling up the Western coast of Scotland, starting in Dumfries, right up Mallaig. I cycled on my electric bike, and a trailer along with all my printing and crafts materials, to deliver a series of community engaged workshops that have a focus on the wonders of the sea. My passion for working with natural materials and sea foraging has led me to the west coast of Scotland, where I have been exploring techniques such as seaweed printing and pressing, natural dyeing and ink making, cyanotypes and analogue film developers etc. I started in Dumfries at Nithraid river festival, travelling up and across to the isle of Arran, up to Argyll, Oban, Mull, North Uist to Mallaig, stopping at harbours, community and arts centres!

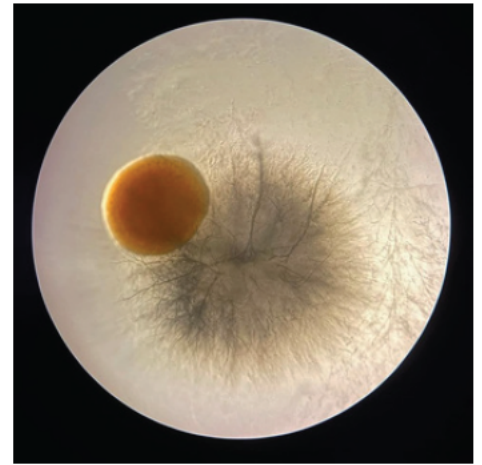
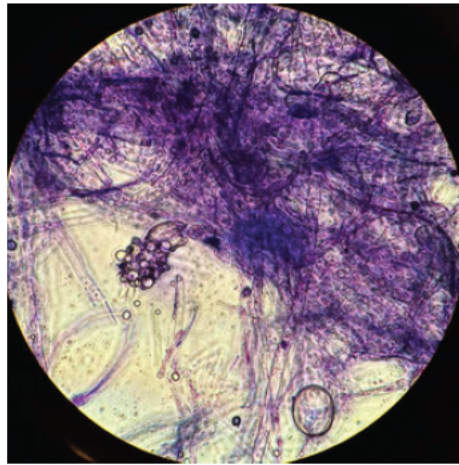
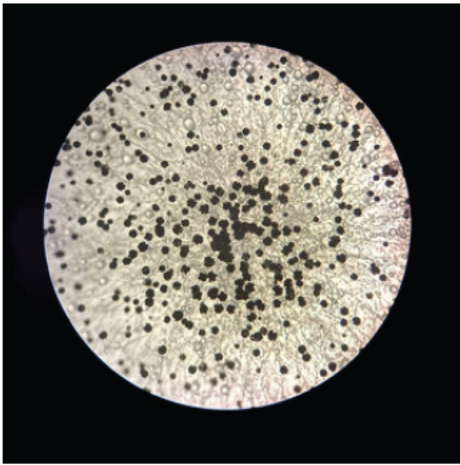
On tour

COMMISSIONED ART

8 ART PROJECTS

year research project, Curious Conversation

A one-year self-directed residency, exploring forest ecology and commercial forest management through a curious and responsive artistic approach working from multiple perspectives - including human, and more than human.



A sense of belonging, gratitude, and reverence anchors my work. Embracing a more-than-human approach, I am passionate about exploring routes to reversing biodiversity loss. My fascination lies in understanding human interdependence and interconnectedness with land and place and our perception of 'nature's value'. I explore concepts of sentience and rights, seeking intersections between science, culture, and ecology.



The project began with lots of time spent in the forest with Andrew a forester, watching his work, and having long, wide ranging conversations and musings.

We've focused on many diverse aspects of forestry, including:

The mythology and folklore surrounding forests.

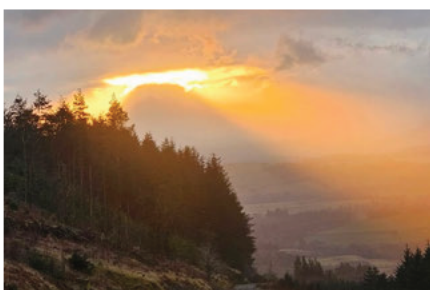
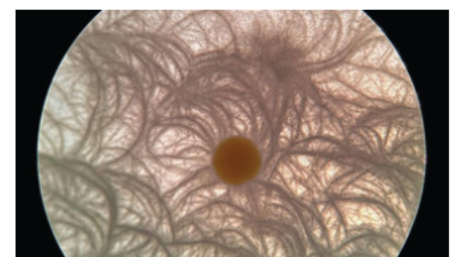
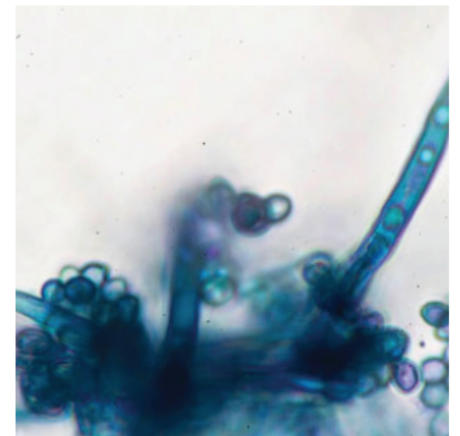
Forest policy in Scotland

Polarity around different types of forest and woodland

Observations of forest wildlife, from moles to badgers.

The transformative effects of forestry practices, such as thinning and its immediate impact on light.

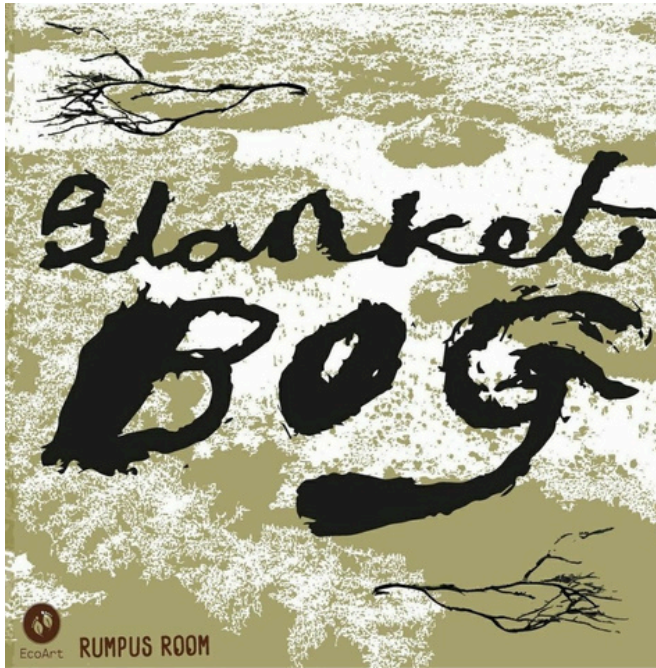
Practical challenges like disease /fungal spread between stumps, and steps foresters take to prevent this.



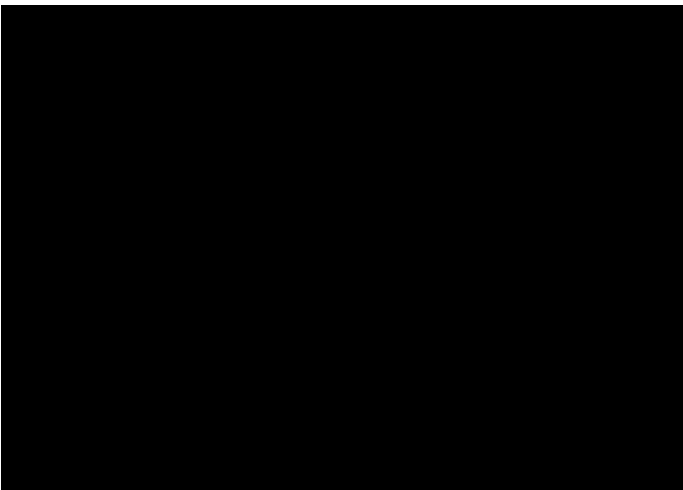
COMMISSIONED ART

8 ART PROJECTS

Blanket Bog



developed the first iteration of the multi-sensory interactive educational tool: the 'Blanket Bog' with which they hosted a weekend of participatory arts workshops in collaboration with Rumpus rooms in Glasgow. During the workshops, they explored the ancient histories of Scottish bogs and their ecological potential through games and creative activities, culminating in the crafting of objects to offer to the bog for future generations, mirroring that of our Iron Age ancestors. The Blanket Bog asks: What do we wish to communicate to the future? How have people done this in the past? What will this generation leave behind for the next to discover?



COMMISSIONED ART

8 ART PROJECTS

Emily Tough, Speed Seed Dating 17 May



💚🌱 Speed Seeds Dating 💚🌱 *Come romance, in the plants!*

Speed Seeds Dating is a speed dating event held on a community garden. This outdoor speed dating event is to invite people into a growing space, giving them a chance to get their hands soily, visit growing spaces, learn new growing techniques, connect with others, hopefully make a new partner/friend all the while getting the big endorphin boost which comes with outdoor land work. The event is open for anyone to apply! There is a match making process behind the scenes to put a rough demographic together for people that are more likely to romantically connect.

EcoArts funded the second of these events. This event was held at The Garden, at The Crichton estate on the 17th of May.

Inviting potential new romancers to connect over the joy of gardening. This outdoor speed dating event is to invite people into a growing space, giving them a chance to get their hands soily, visit growing spaces, learn new growing techniques, connect with others, maybe make a new partner/friend all the while getting the big endorphin boost which comes with outdoor land work.



There were 22 submissions for people to attend the event. 14 people were invited, 10 people came. 3 people matched – were asked to be put in contact after the event. There were 4 cherubs (volunteer stewards) who's role it is to look after the romancers (participants) while in the gardening space. Head gardener and event organiser were also present at the event.



Romancers feedback in quotes:

- 'This has been wonderful, would definitely recommend to a friend. There should be more event soon!'*
- 'I loved how inclusive the submission process was, as a queer person the process made me feel comfortable and understood.'*
- 'A lot better than a dating app!'*
- 'I learnt about different plants and growing techniques.'*



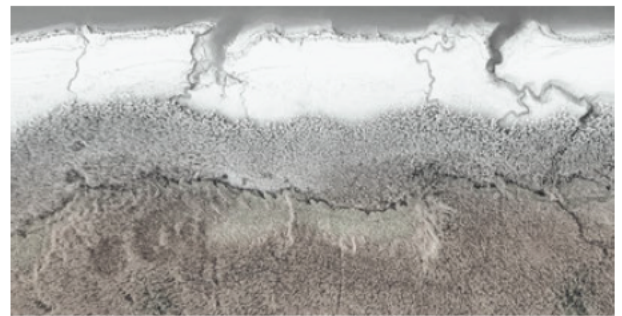
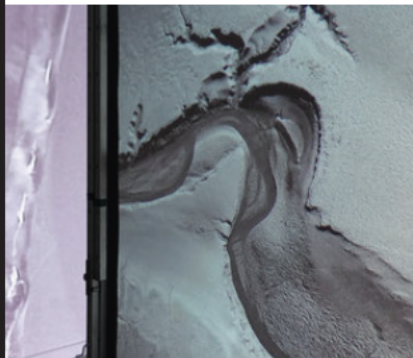
COMMISSIONED ART

8 ART PROJECTS

Conversation with our Ocean

This is a project engendering hope! Our oceans' health is in crisis, therefore so is ours. Every second breath we take is generated by the oceans. At the core of our project is the knowledge that the ocean holds solutions to help tackle the climate emergency. Kelp forests together with plankton, comprise roughly half the organic matter on Earth, and produce approx. half the Earth's oxygen. Seagrass can store carbon at a rate up to 35 times greater than rainforests, and salt marshes store carbon at a rate about 50 times more than terrestrial forests!

A week-long exhibition in Dumfries was home to their films as projection art.




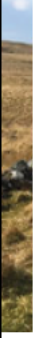

Workshop with colleague, Art Specialist, Katie Fowle. "From Sea to Sustainability: Ocean-Friendly Bioplastics" This workshop offered a hands-on fusion of art and science, empowering young participants from Dalbeattie High School to create ocean-friendly bioplastics. The workshop highlighted the pivotal role of interdisciplinary collaboration in developing sustainable solutions to climate change. Participants discussed the environmental impact of traditional plastics whilst gaining hands-on experience in crafting biodegradable materials alongside exploring the scientific principles and artistic inspiration drawn from coastal habitats and ocean ecosystems.



COMMISSIONED ART

8 ART PROJECTS

peeding Backwards



is a mixed media artist from Dumfries and Galloway. I specialise in a process called Wet Plate photography, an old and complex form of picture taking from the 1800's. This process involves pouring liquid chemicals onto a metal plate and developing them almost immediately in a dark room.

Speeding Backwards:

In the project speeding backwards, I will be using a custom-built dark room bicycle trailer to tour Ireland

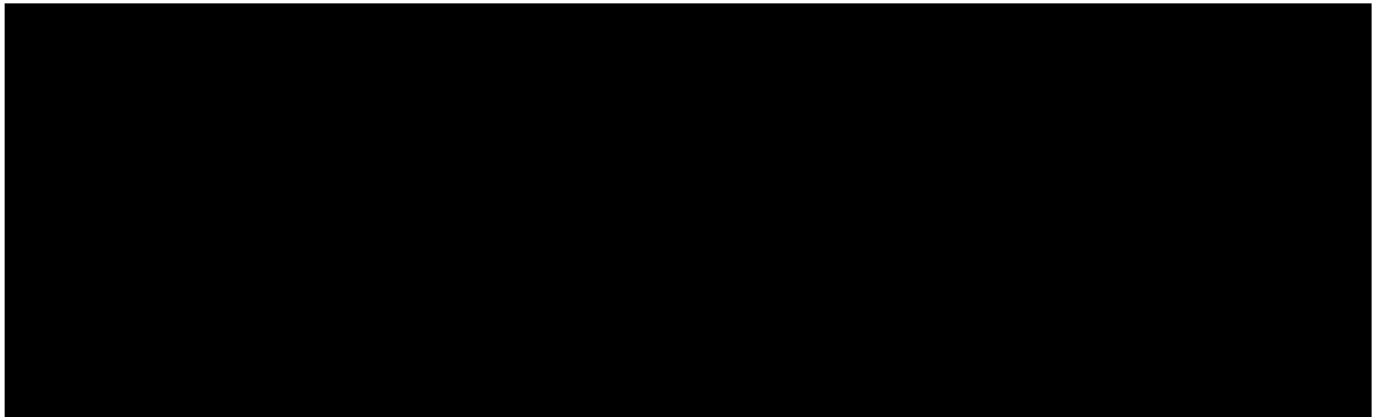
This year I will take the bicycle trailer to the Climate Camp in Ireland 7th -11th August taking portraits of those involved in the struggle. Then continuing down the coast for a week collecting stories, dreams, solidarity and hope to share in an exhibition at Nithraid on the 24th of August.

Nithraid is a celebration of movement, of cyclical change, of the moon pulling the salt water of the sea all the way up to Dumfries. I will be collecting our stories, our folklore and hopes for our future to share with the next journey.

COMMISSIONED ART

8 ART PROJECTS

Sounding Poems



will be developing his work 'Sounding Poems'. The words and sounds tell of his concern for and his awe and love of the natural environment. They also reflect his anger about the disrespect the societies we live in show to the environment. The work responds to the exploitation of those that have no voice and makes comment on the abuse of land and air and water and on the marginalisation of the more-than-human communities who live on the land, breath the air and depend on water

I was invited to present "MORE THAN US" at Nithraid in Dumfries august/24.

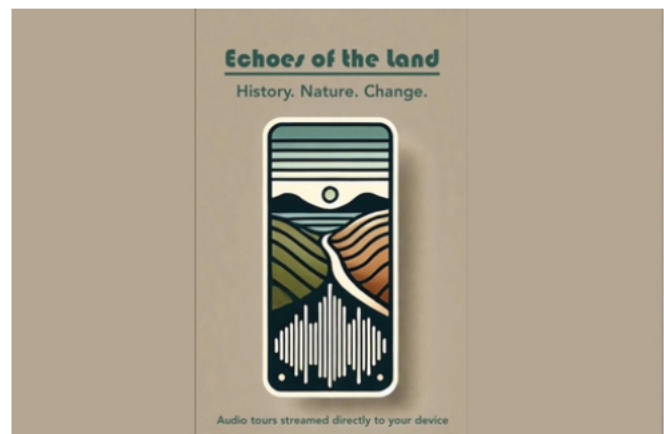
At this point I had found sounds for around 20 texts that I was confident they match and support each other.

The informal and loose structure of Nithraid was a perfect situation to try sounds / poems combinations that were very much in progress.

Echos of the Land

A series of audio walks streamed directly to the listener's mobile device weaving together environmental themes (with a focus on climate change and biodiversity loss), local history and culture, using sound to enhance connection to nature. The first tour will focus on the history of the Creetown Curling Ponds, and will include collaboration with local artists, schools and musicians. Listeners will be directed along a beautiful walk, with multiple stops along the way to listen to information, insights, music, soundscapes, and poetry. This initiative aims to educate and inspire action, fostering a sustainable future through the power of sound and storytelling.

Sadly this project didn't complete after it ran into difficulty after woodland on parts of the initial walk were wind blown and felled.



RESIDENCIES



██████████ a bisexual transgender performance artist born in Scotland and currently living and working in Spain.

Their performances mix popular culture and traditions with social criticism and take place in diverse contexts. They started doing punk style drag in the 90's as ██████████ transforming over the years into their current manifestation as Geyserbird ██████████ animal hybrid - who carries out ecoqueer participatory rituals.

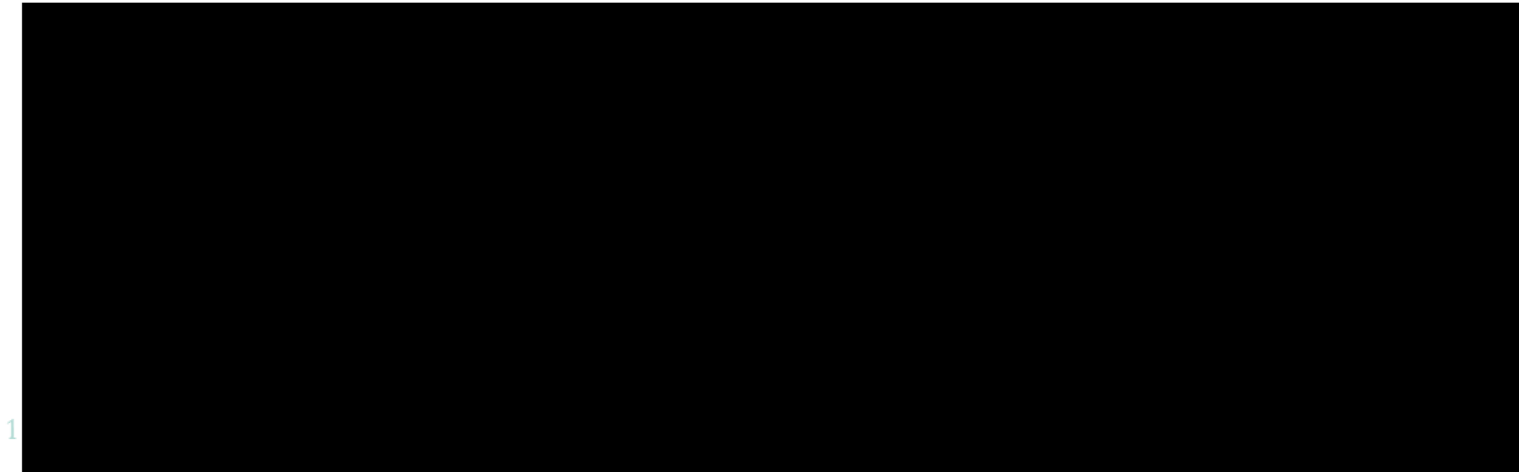
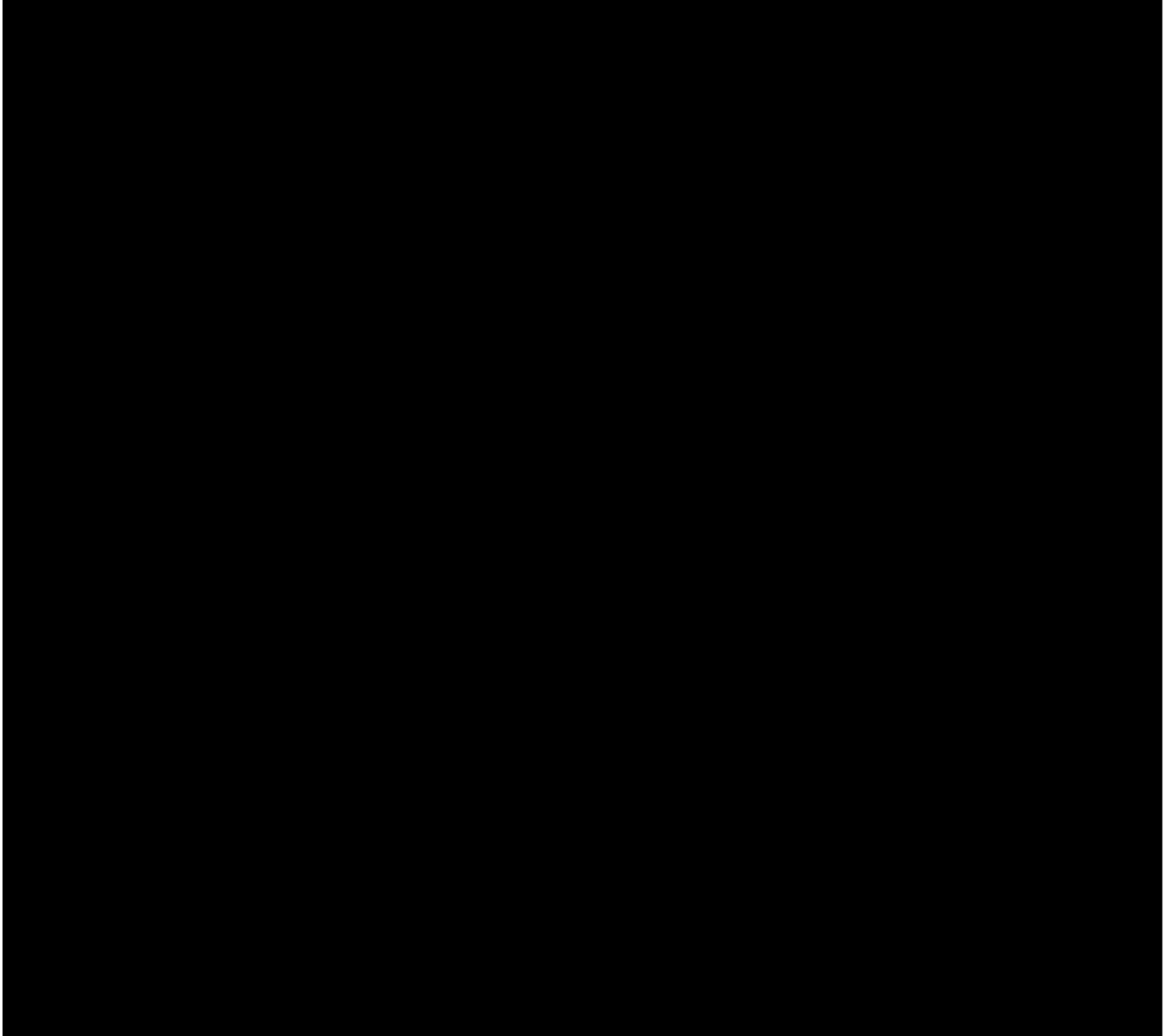
██████████ delivered an intervention explaining his ecoqueer artist's residency at ██████████ gave a performative lecture in Kirkcudbright - Geyserbird and the very queer ecology of ritual with an introduction to their ecoqueer art practice which unites performance with LGBTQI+ and environmental activism and held a banner making workshop at our studio

At the Nithraid festival he started the Animal Union- Trade Union Summit/Potlatch Chapters of River Animals were invited to the foundational act of the Animal Union. This was followed by a journey to St Benedicts Convent, Dumfries, where participants carried out the participatory opening ceremony of the first Post industrial Natural Queer (P.I.N.Q.) Park in Scotland.



OUR HOME

A COMMUNITY SPACE FOR FRIENDSHIP, REPAIR, REUSE,
UPCYCLING, SKILL SHARING AND WELLBEING



COMMUNITY ENGAGEMENT

Workshops, Meetups & Groups

108 workshops with 659 people attending.

The most popular was the Slow Stitching Social which we ran on 24 occasions and had to increase to 3-4 times a month due to demand. Mindful Dotty Art ran 17 times. Plant Connections ran 10 times. Make do and Mend ran 20 times.

Some of the other workshops include, Woolly Spinners Gaither, Eco Crafters, Foraging through the seasons, Upcycle Bicycle Inner Tubes, Climate Kitchen, Climate Cafe, DIY Deodorant.

We had Furniture Upcycling advertised 10 times, running only 5. This is our most expensive workshop and bookings were usually 1-2 so we decided to open it up for free for those who wanted to learn skills and paint one of our pieces to raise funds, this has proved successful. Art for the Soul ran 4 times then stopped due to low uptake. The Sleeping with Trees received no interest at all - why wouldn't you want to sleep under a tree?

More engagements

Approximately 2632 people at 65 events

*We ran an Upcycled Lantern events for the Festival of Light with around 35 folk
For Kirkcudbright Summer Festivities we run 3 upcycled flags making workshops, approx 100 folk.
At the Steampunk festival we hosted bicycle inner tube upcycling for around 45 folk
The Bioshere asked us to do inner tube cuffs and cable tidy workshop at their event at the Cairndale Hotel in Dumfries for 35 attendees. With Upland we hosted a CAN event for around 30 folk
At the Arts and Craft Trail we hosted Kirkcudbright Squared and Old Mill arts at the studio over 4 days, Attendees unknown, but well over 100. Collaborating with Whithorn Community Centre, DG Climate Hub and Solway Firth Partnership we delivered a beach plastic upcycle workshop for around 30 folk. Nithraid River Festival approx 1000, 10 Repair Cafes 400 fold, Art Residency 4 events 62 folk. Climate Literacy training 8, Gartmore House 7*

Total of 173 events with approx 2500 participants

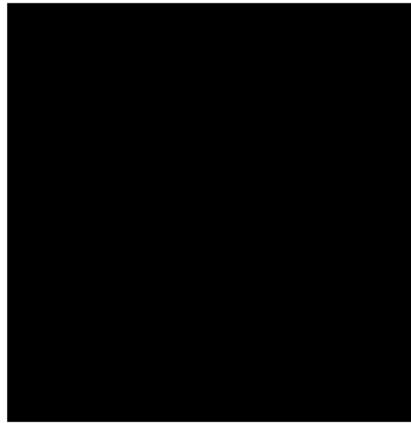
COMMUNITY ENGAGEMENT

New Workshops, Meetups & Groups



Clothes Swap

we hosted 4 over, that were well attended this year, borrowing the kit from a lady in Creetown. A great example of sharing resources



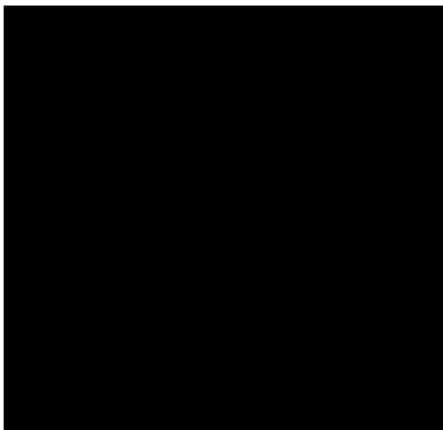
Climate Kitchen

A place for cooking up climate action. Guest speakers & soup supper

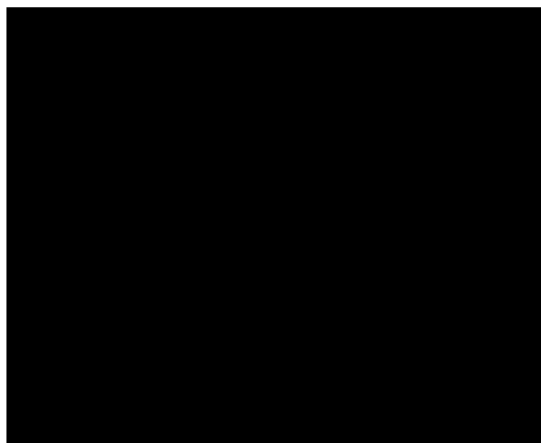


Seasonal Foraging

We programmed a series of forages in the same area to increase confidence in learning plant identification

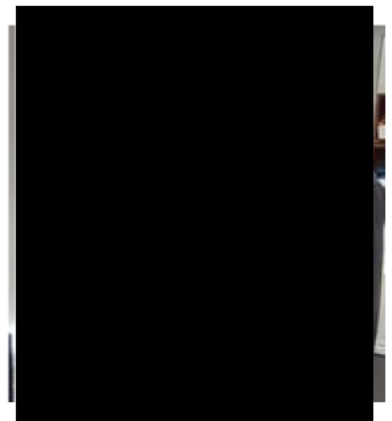


Joyful at the Repair Cafe



Woolly Spinners Gaither

Peer led learning for all things woolly. From preparing our donated fleece for carding, spinning, weaving, knitting, felting



sewing at the Repair Cafe



COMMUNITY ENGAGEMENT

Wellbeing Workshops

An important aspect of community resilience is wellbeing.

We host wellbeing workshops that nurture creativity & address isolation, self care & self reflection. This is done by holding a safe place where we hope to foster a sense of belonging

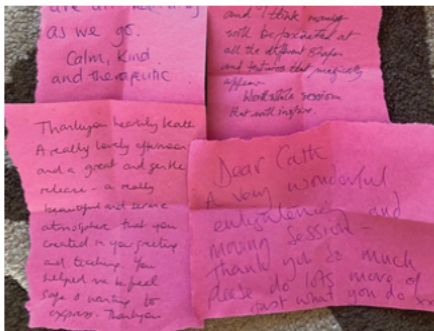
Art for the soul. New monthly sessions hosted by [redacted]. This is an uplifting workshop to release some of the stresses and pressures of everyday life and have fun exploring the magic of Eco Rubbings! Combining easy art and Energy Alignment



Mindful Dotty Art for Wellbeing. Using simple mark making techniques and guided meditation. Much of the session is silent to allow for self connection.



A Climate Cafe is a facilitated therapeutic space to safely share feelings around the climate and environmental crises. It is based on the Climate Psychology Alliance Model adapted from Death Cafes.



Slow Stitching Social. A friendly meetup. Hand stitching for wellbeing and mending. Play with colour, fabric scraps and simple stitches

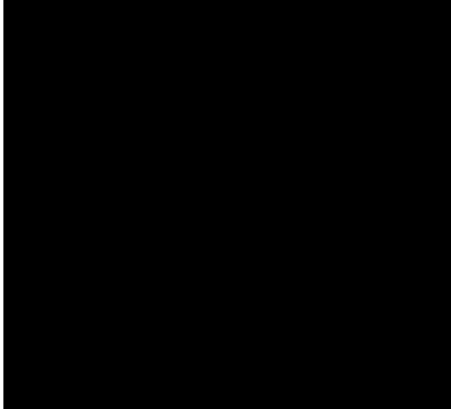
Plant Connections: Peer led group. Growing your own food, foraging and making your own medicine are radical acts that empower us and deepen our connection with ourselves, our heritage and nature. This is of great value for wellbeing, community and adapting to the environmental crisis.



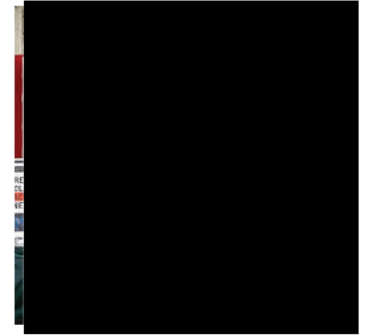
Fire Cider flu remedy

COMMUNITY ENGAGEMENT

Hosted Climate Literacy Training



Add insulation loft insulation can pay for itself within the first heating season on a DIY basis, we suggest adding to make the total thickness up to 400mm.



Draft proof training with Reading Draught Busters



We hosted a trial CAN with Upland. Artists and makers are invited to exchange unwanted art materials and tools with fellow artists in the region.

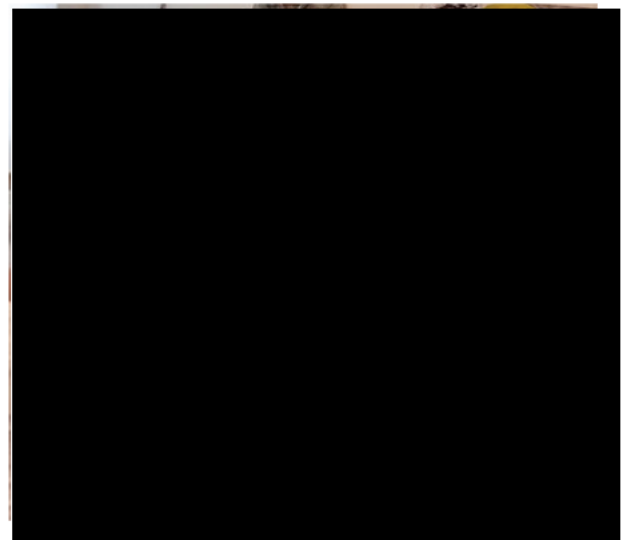
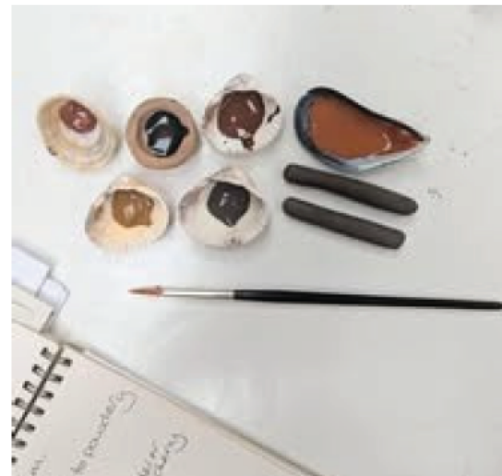


Volunteer day

We celebrated our amazing volunteers by inviting them for a lunch social

Id Mill Arts

took over the studio during the Trail to share their homemade natural paints, inks & art tools



COMMUNITY ENGAGEMENT

Upcycled Bottle Lantern

Family workshop for the
Festival of Light



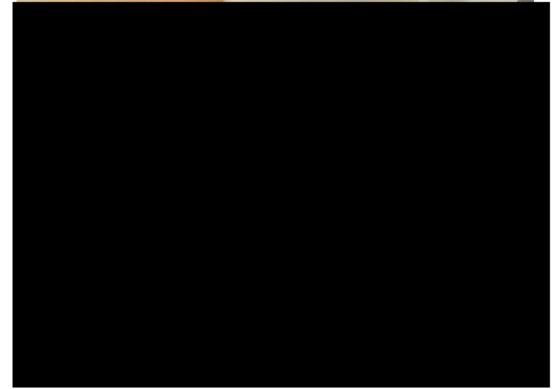
Doughnut Haul

At our first event, "Free Food
Fridays" was on the lips of
the school children as they
passed by during breaktime
Doughnuts in hand



Upcycled Flags

we used old envelopes to replace
the plastic ones usually handed out
for the community parade. A win.



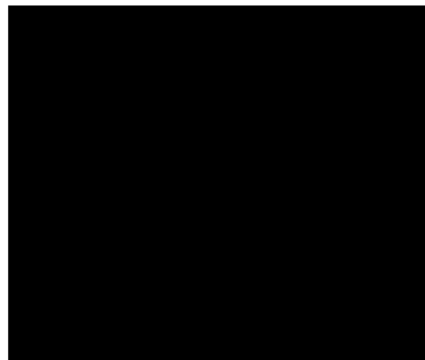
Furniture Upcycling

4 day residential course
delivered at Gartmore
House, The Trossachs



Upcycled Wearables

Transforming old bicycle inner
tubes, cogs & broken jewellery
for the Steampunk Festival



Plastic Sculpture

Hosted a workshop for DG
Mac CAN using beach finds

Apple Pressing

Community event hosted at
the orchard, failed due to
rainy weather



Residential home tenants
assist with sorting 100's
of ribbons & buttons



CONNECTIONS



Digital Presence

We have a social media presence of 2,350 followers. We are on Facebook and Instagram and use the hashtags #ecoartnews #flagsforclimatechange #signalstotheworld



Make do & Mend session

Collaborators

During the year we had collaborations with Galloway and Southern Ayrshire UNESCO Biosphere, Kirkcudbright Steampunk Agency, Gartmore House, Kirkcudbright Arts & Craft Trail, The Stove Network, BBC, DG Climate Hub, Kirkcudbright Summer Festivities, Upand with CAN, Propagate, [redacted] Upholstry, [redacted] clothes swap, [redacted] ceanallover, SWSEIC, The Little Bakery, SW Sea Products, Co-op, [redacted] Bakery, Threave Gardens, Plant Listening, South Machars Community Centre, The Old Mill Studio, Guild of Weavers & Dyers, Education Scotland, Solway Firth Partnership, Whithorn Community Centre



Sea plastic sculpture workshop



Dotty Art for Wellbeing

A gigantic thank you to our volunteers without whom we could not have achieved what we have

CONNECTIONS

Memberships



A Big Thank You to our Funders

*Dumfries & Galloway Regional Arts Fund, Holywood Trust
Blackthorn Salt, Kingholm Quay Community.*

FINANCIAL REVIEW

Statement of the charity's policy on reserves

EcoArt was founded with a donation of £500,000 to meet all the overhead costs of the organisation for at least ten years as well as enabling us to fund multiple projects that support our charitable purposes. This aligns with our plan to operate EcoArt for a minimum of ten years - until at least 2030. To achieve this we require our net annual expenditure to be approximately £50,000. With this in mind we are comfortably on target to achieve this aim, as in our fifth year the income generated was almost £30,000 and we spent almost £80,000 our net expenditure (expenditure less income received) has been £49,686

Total Funds Carried Forward are £332,605



*Moth brooch, Slow
Stitching Social*

Details of any deficit

There are no deficits to report.

Donated facilities and services

Time was donated by Trustees as well as multiple volunteers.

FUTURE PLANS

2024-2025

For the coming year we're looking forward to embedding further within the Dumfries and Galloway community, building on existing collaborations, connections, partners and volunteers

There will be further development of The Nithraid River Festival as it transitions into an independent environmental arts festival which we will co-fund and produce.

It is hoped to start the community consultation to explore the possibility of a new Kirkcudbright Community Garden.

The Solway Hoard exhibition, a former Museum of the Future Now project is now in the care of EcoArt. It is a museum style exhibition hosting a display of found plastic objects set 1000 years in the future, The Era of Plastic. We will be looking for new hosts.

We look forward to growing our impact with more workshops and social groups

Our resident artist [REDACTED] will be returning to launch his book "Trans Territory, Animal Union and other Eco-Queer Utopias" based on his residency in Dumfries and Galloway.

We are looking forward to hearing about [REDACTED] commissioned artist's research



Museum of the Future Now



2024-2025

SIGNED ON BEHALF OF THE CHARITY:



PRINT NAME:

DESIGNATION:

CHAIRPERSON

DATE:

29 OCT 2025

SIGNED ON BEHALF OF THE CHARITY:



PRINT NAME:

DESIGNATION:

TREASURER

DATE:

29 OCT 2025

Independent Examiner's Report to the Trustees of EcoArt SCIO

I report on the accounts of the charity for the year ended 31 January 2025 which are set out on pages 1 to 16 .

Respective responsibilities of trustees and examiner

The charity's trustees are responsible for the preparation of the accounts in accordance with the terms of the Charities and Trustee Investment (Scotland) Act 2005 and the Charities Accounts (Scotland) Regulation 2006. The charity trustees consider that the audit requirement of Regulation 10(1) (d) of the 2006 Accounts Regulations does not apply. It is my responsibility to examine the accounts as required under section 44(1) (c) of the Act and to state whether particular matters have come to my attention.

Basis of independent examiner's statement

My examination is carried out in accordance with Regulation 11 of the 2006 Accounts Regulations. An examination includes a review of the accounting records kept by the charity and a comparison of the accounts presented with those records. It also includes consideration of any unusual items or disclosures in the accounts, and seeks explanations from the trustees concerning any such matters. The procedures undertaken do not provide all the evidence that would be required in an audit, and consequently I do not express an audit opinion on the view given by the accounts.

Independent examiner's statement

In the course of my examination, no matter has come to my attention


1. which gives me reasonable cause to believe that in any material respect the requirements:

- to keep accounting records in accordance with Section 44(1)(a) of the 2005 Act and Regulation 4 of the 2006 Accounts Regulations
- to prepare accounts which accord with the account records and comply with Regulation 9 of the 2006 Regulations have not been met, or

2. to which, in my opinion, attention should be drawn in order to enable a proper understanding of the accounts to be reached.

Name: 

Relevant Professional qualification/professional body: ACCA 1039369



Date: 28th October 2025



EcoArt SCIO			Charity No SC049905		CC17a
Annual accounts for the period					
Period start date	01-Feb-24	To	Period end date	31-Jan-25	

Section A Statement of financial activities

Recommended categories by activity	Details of own analysis	Note	Restricted			Total this year £	Total last year £
			Unrestricted funds £	income funds £	Endowment funds £		
			F01	F02	F03	F04	F05
Incoming resources (Note 3)							
Incoming resources from generated funds							
Voluntary income		3.1	-	-	-	-	-
Activities for generating funds	Events & Products	3.1	4,086	-	-	4,086	2,693
Investment income	Interest	3.2	7,535	-	-	7,535	6,229
Incoming resources from charitable activities							
Other incoming resources	Donations	3.3	13,520	-	-	13,520	1,667
Other incoming resources	Government Grants	3.3	-	-	-	-	-
Other incoming resources	Grants	3.3	5,000	-	-	5,000	1,476
Total incoming resources			30,141	-	-	30,141	12,065
Resources expended (Notes 4-8)							
Costs of Generating Funds							
Costs of generating voluntary income		4.1	16,917	-	-	16,917	9,476
Fundraising trading costs		4.1	-	-	-	-	-
Investment management costs		4.1	-	-	-	-	-
Charitable activities	Management Cost	4.2	62,435	-	-	62,435	40,575
Governance costs	Professional Fees	4.3	486	-	-	486	475
Other resources expended		4.3	-	-	-	-	-
Total resources expended			79,838	-	-	79,838	50,526
Net incoming/(outgoing) resources before transfers			(49,696)	-	-	(49,696)	(38,460)
Gross transfers between funds							
Net incoming/(outgoing) resources before other recognised gains/(losses)			(49,696)	-	-	(49,696)	(38,460)
Other recognised gains/(losses)							
Gains and losses on revaluation of fixed assets for the charity's own use			-	-	-	-	-
Gains and losses on investment assets			-	-	-	-	-
Net movement in funds			(49,696)	-	-	(49,696)	(38,460)
Total funds brought forward			381,449	852	-	382,301	420,761
Total funds carried forward			331,753	852	-	332,605	382,301

Section B Balance sheet

	Note	Restricted			Total this year £	Total last year £
		Unrestricted funds £	income funds £	Endowment funds £		
		F01	F02	F03	F04	F05
Fixed assets						
Tangible assets (Note 9)		-	-	-	-	-
Investments (Note 10)		-	-	-	-	-
Total fixed assets	10	-	-	-	-	-
Current assets						
Stock and work in progress	11	-	-	-	-	-
Debtors (Note 11)	11	-	-	-	-	-
(Short term) investments	11	-	-	-	-	-
Cash at bank and in hand		329,872	3,698	-	333,570	385,271
Total current assets		329,872	3,698	-	333,570	385,271
Creditors: amounts falling due within one year (Note 12)	12	965	-	-	965	2,970
		328,907	3,698	-	332,605	382,301
	12	328,907	3,698	-	332,605	382,301
Creditors: amounts falling due after one year (Note 12)	12	-	-	-	-	-
Provisions for liabilities and charges		-	-	-	-	-
Net assets		328,907	3,698	-	332,605	382,301
Funds of the Charity						
Unrestricted funds		328,907			328,907	372,356
		-			-	-
Restricted income funds (Note 13)	13		3,698		3,698	9,945
Endowment funds (Note 13)	13			-	-	-
Total funds		328,907	3,698	-	332,605	382,301

Signed by one or two trustees on behalf of all the trustees

Signature

Print Name

Date of approval

30-10-2025

30.10.2025

Section C**Notes to the accounts****Note 1 Basis of preparation**

This section should be completed by all charities .

1.1 Basis of accounting

These accounts have been prepared on the basis of historic cost in accordance with:

- Accounting and Reporting by Charities – Statement of Recommended Practice (SORP 2005);
- and with Accounting Standards;
- and with the Charities Act.

Note 2 Accounting policies

This standard list of accounting policies has been applied by the charity except for those deleted. Where a different or additional policy has been adopted then this is detailed in the box below.

INCOMING RESOURCES

Recognition of incoming resources	These are included in the Statement of Financial Activities (SoFA) when: <ul style="list-style-type: none"> the charity becomes entitled to the resources; the trustees are virtually certain they will receive the resources; and the monetary value can be measured with sufficient reliability.
Incoming resources with related expenditure	Where incoming resources have related expenditure (as with fundraising or contract income) the incoming resources and related expenditure are reported gross in the SoFA.
Grants and donations	Grants and donations are only included in the SoFA when the charity has unconditional entitlement to the resources.
Tax reclaims on donations and gifts	Incoming resources from tax reclaims are included in the SoFA at the same time as the gift to which they relate.
Contractual income and performance related grants	This is only included in the SoFA once the related goods or services have been delivered.
Gifts in kind	Gifts in kind are accounted for at a reasonable estimate of their value to the charity or the amount actually realised. Gifts in kind for sale or distribution are included in the accounts as gifts only when sold or distributed by the charity. Gifts in kind for use by the charity are included in the SoFA as incoming resources when receivable.
Donated services and facilities	These are only included in incoming resources (with an equivalent amount in resources expended) where the benefit to the charity is reasonably quantifiable, measurable and material. The value placed on these resources is the estimated value to the charity of the service or facility received.
Volunteer help	The value of any voluntary help received is not included in the accounts but is described in the trustees' annual report.
Investment income	This is included in the accounts when receivable.
Investment gains and losses	This includes any gain or loss on the sale of investments and any gain or loss resulting from revaluing investments to market value at the end of the year.

EXPENDITURE AND LIABILITIES

Liability recognition	Liabilities are recognised as soon as there is a legal or constructive obligation committing the charity to pay out resources.
Governance costs	Include costs of the preparation and examination of statutory accounts, the costs of trustee meetings and cost of any legal advice to trustees on governance or constitutional matters.
Grants with performance conditions	Where the charity gives a grant with conditions for its payment being a specific level of service or output to be provided, such grants are only recognised in the SoFA once the recipient of the grant has provided the specified service or output.
Grants payable without performance conditions	These are only recognised in the accounts when a commitment has been made and there are no conditions to be met relating to the grant which remain in the control of the charity.
Support Costs	Support costs include central functions and have been allocated to activity cost categories on a basis consistent with the use of resources, eg allocating property costs by floor areas, or per capita, staff costs by the time spent and other costs by their usage.

ASSETS

Tangible fixed assets for use by charity	These are capitalised if they can be used for more than one year, and cost at least £500. They are valued at cost or a reasonable value on receipt.
Investments	Investments quoted on a recognised stock exchange are valued at market value at the year end. Other investment assets are included at trustees' best estimate of market value.
Stocks and work in progress	These are valued at the lower of cost or market value.

Section C **Notes to the accounts** **(cont)**

Note 3 **Analysis of incoming resources**

Incoming resources may be further analysed if this would help the reader of the accounts.

	Analysis	This year £	Last year £
3.1 Voluntary income	Events	3,713	2,271
	Products	372	210
	Other Revenue	-	212
		-	-
	Total	4,086	2,693
3.2 Investment income	Interest	7,535	6,229
		-	-
		-	-
		-	-
	Total	7,535	6,229
3.3 Other incoming resources	Founding donation	-	-
	Other donations	13,520	1,667
	HMRC - Job Retention Scheme	-	-
	Grant Giving Organisations	5,000	1,476
	Total	18,520	3,143

Section C **Notes to the accounts** **(cont)**

Note 4 **Analysis of resources expended**

Resources expended may be further analysed if this would help the reader of the accounts.

	Analysis	This year £	Last year £
4.1 Costs of generating voluntary income	Event costs, fees and commissions	16,633	9,225
	Materials and consumables	284	250
	Postage, packing, freight and courier	-	-
	Promotion, advertising and marketing	531	242
	Subcontract, casual labour or third person expense	-	-
	Total		17,448
4.2 Charitable activities	Salaries	30,503	30,862
	Rent	5,320	5,059
	Rates		393
	Travel and subsistence	198	53
	IT	760	526
	Office expenses	1,054	1,934
	Entertainment	923	671
	Insurance	407	426
	Bank Charges	141	100
	Art Commission by EcoArt	19,107	-
	Professional Fees	1,661	308
Art Residency expenses	1,830	-	
Total		61,904	40,332
4.3 Governance costs	Pension set-up fee	-	-
	Independent examiner's fee	486	475
		-	-
Total		486	475

Note 5 Support Costs

Please complete this note if the charity has analysed its expenses using activity categories and has support costs.

Support cost type	Fundraising activity £	Charitable Activity £	Governance Activity £	Total Cost £
	-	-	-	-
	-	-	-	-
	-	-	-	-
	-	-	-	-
	-	-	-	-
	-	-	-	-
	-	-	-	-
Total	-	-	-	-

Note 6 Details of certain items of expenditure

6.1 Trustee expenses

Please provide details of the amount of any payment or reimbursement of out-of-pocket expenses made to trustees or to third parties for expenses incurred by trustees. If no expenses were paid, please enter 'None' in the appropriate box(es).

	This year	Last year
Number of trustees who were paid expenses	N/A	N/A
Nature of the expenses	N/A	N/A
Total amount paid	N/A	N/A

6.2 Fees for examination or audit of the accounts

Please provide details of the amount paid for any statutory external scrutiny of accounts and other services provided by your independent examiner or auditor. If nothing was paid please enter NONE in the appropriate box(es).

	This year £	Last year £
Independent examiner's or auditors' fees for reporting on the accounts	486	475
Other fees (for example: advice, consultancy, accountancy services) paid to the independent examiner or auditor	None	None

Note 7 **Paid employees***Please complete this note if the charity has any employees.***7.1 Staff Costs**

	This year £	Last year £
Gross wages, salaries and benefits in kind	22,442	22,693
Employer's National Insurance costs	-	-
Pension costs	8,061	8,169
Total staff costs	30,503	30,862

7.2 Average number of full-time equivalent employees in the year

	This year Number	Last year Number
The parts of the charity in which the employees work		
All	1	1
	-	-
	-	-
	-	-
Total	1	1

7.3 Defined contribution pension scheme*Please complete if a defined contribution pension scheme is operated.*

Brief details of the scheme

B&C Holdings

	This year £	Last year £
The costs of the scheme to the charity for the year	8,061	8169
The amount of any contributions outstanding at the year end	-	-
The amount of any contributions prepaid at the year end	-	-

Section C **Notes to the** **(cont)**

Note 7 **Creditors and accruals**

Please complete this note if the charity has any creditors or accruals.

Analysis of creditors

	Amounts falling due within one year		Amounts falling due after more than one year	
	This year £	Last year £	This year £	Last year £
Loans and overdrafts	-	-	-	-
Trade creditors	-	2970	-	-
Amounts due to subsidiary and associated undertakings	-	-	-	-
Payroll related	965	0	-	-
Accruals and deferred income	-	0	-	-
Total	965	2,970	-	-

Section C **Notes to the accounts** **(cont)**

Note 9 **Tangible fixed assets**
Please complete this note if the charity has any tangible fixed assets

9.1 Cost or valuation

	Freehold land & buildings	Other land & buildings	Plant, machinery and motor vehicles	Fixtures, fittings and equipment	Payments on account and assets under construction	Total
	£	£	£	£	£	£
Balance brought forward	-	-	-	-	-	-
Additions	-	-	-	-	-	-
Revaluations	-	-	-	-	-	-
Disposals	-	-	-	-	-	-
Transfers *	-	-	-	-	-	-
Balance carried forward	-	-	-	-	-	-

9.2 Accumulated depreciation and impairment provisions

**Basis	SL or RB	SL or RB	SL or RB	SL or RB	SL or RB
** Rate					

Balance brought forward	-	-	-	-	-	-
Depreciation charge for year	-	-	-	-	-	-
Impairment provisions	-	-	-	-	-	-
Revaluations	-	-	-	-	-	-
Disposals	-	-	-	-	-	-
Transfers*	-	-	-	-	-	-
Balance carried forward	-	-	-	-	-	-

9.3 Net book value

Brought forward	-	-	-	-	-	-
Carried forward	-	-	-	-	-	-

9.4 Revaluation

If any fixed assets have been revalued please give details of the valuer and method of valuation

--

* The "transfers" row is for movements between fixed asset categories.

** Please indicate the method of depreciation by deleting the method not applicable (SL = straight line; RB = reducing balance). Also please indicate the rate of depreciation: for straight line, what is the anticipated life of the asset (in years); for reducing balance, what is the percentage annual deduction.

Section C **Notes to the accounts** **(cont)**

Note 10 **Investment assets**

Please complete this note if the charity has any investment assets.

10.1 Fixed assets investments

	£
Carrying (market) value at beginning of year	-
Add: additions to investments at cost	-
Less: disposals at carrying value	-
Add/(deduct): net gain/(loss) on revaluation	-
Carrying (market) value at end of year	-

Please provide below:

10.2 A breakdown of the market values of investments shown above agreeing with the balance sheet row B03.

10.3 A breakdown of the income from investments agreeing with SOFA row S03.

Analysis of investments

	10.2 Market value at year end £	10.3 Income from investments for the year £
Investment properties	-	-
Investments listed on a recognised stock exchange or held in common investment funds, open ended investment companies, unit trusts or other collective investment schemes	-	-
Investments in subsidiary or connected undertakings and companies	-	-
Securities not listed on a recognised Stock Exchange	-	-
Cash held as part of the investment portfolio	-	-
Other investments	-	-
Total	-	-

10.4 Material investment holdings

If any single investment is material in terms of its value (for example represents more than 5 per cent of the value of the charity's total investments) please provide details.

Investment held	
Market Value	

Note 11 Debtors and prepayments

Please complete this note if the charity has any debtors or prepayments.

Analysis of debtors

	Amounts falling due within one year		Amounts falling due after more than one year	
	This year £	Last year £	This year £	Last year £
Trade debtors	-	-	-	-
Amounts due from subsidiary and associated undertakings	-	-	-	-
Other debtors	-	-	-	-
Prepayments and accrued income	-	-	-	-
Total	-	-	-	-

Note 12 Creditors and accruals

Please complete this note if the charity has any creditors or accruals.

12.1 Analysis of creditors

	Amounts falling due within one year		Amounts falling due after more than one year	
	This year £	Last year £	This year £	Last year £
Loans and overdrafts	-	-	-	-
Trade creditors	-	2,970	-	-
Amounts due to subsidiary and associated undertakings	-	-	-	-
Other creditors (Payroll)	965	-	-	-
Accruals and deferred income	-	-	-	-
Total	965	2,970	-	-

12.2 Security over assets

If any loan, overdraft or other creditor holds a charge or other security over any assets of the charity please provide details.

--

Section C **Notes to the accounts** **(cont)**

Note 13 **Endowment and restricted income funds**

Please complete this section if the charity has any endowment or restricted income funds.

13.1 Funds held

Please give a brief description of any of the following type of funds held by the charity:

- permanent endowment funds (PE);
- expendable endowment funds (EE); and
- restricted income funds, including special trusts, of the charity (R).

Fund Name	Type PE, EE or R	Purpose and Restrictions
Wise	R	Not to be spent on Administration or management

13.2 Movements of major funds

Please give details of the movements of the major funds summarised in the restricted and endowment columns of the Statement of Financial Activities.

Fund names	Fund balances brought forward £	Incoming resources £	Outgoing resources £	Transfers £	Gains and losses £	Fund balances carried forward £
Wise	9,945	25,178	- 31,426	-	-	3,697
	-	-	-	-	-	-
	-	-	-	-	-	-
	-	-	-	-	-	-
	-	-	-	-	-	-
	-	-	-	-	-	-
Total Funds	9,945	25,178	(31,426)	-	-	3,697

13.3 Transfers between funds

Please give details of any transfers between funds.

From Fund (Name)	To Fund (Name)	Reason	Amount

Note 14 Transactions with related parties

If the charity has any transactions with related parties (other than the trustee expenses explained in note 6) details of such transactions should be provided in this note. If there are no transactions to report, please enter "None" in the relevant boxes.

14.1 Remuneration and benefits

Please give the amount of, and legal authority for, any remuneration or other benefits paid to a trustee or other related parties by the charity or any institution or company connected with it.

Name of trustee or connected party	Legal authority (eg order, governing document)	Amounts paid or benefit value	
		This year £	Last year £
Rosemary Hall	Constitution	30,503	30,862

14.2 Loans

Please give details of and amounts owing to or from the charity's trustees or other related parties by the charity at the year end.

	Name of trustee or connected party	Legal authority	Amount owing	
			This year £	Last year £
Due to trustees and related parties			None	None
Due from trustees and related parties			None	None

14.3 Other transaction(s) with trustees or related parties

Please give details of any transaction undertaken by (or on behalf of) the charity in which a trustee or related party has a material interest.

Name of the trustee or related party	Relationship to charity	Description of the transaction(s)	This year £	Last year £
			None	None

